

Planmeca PlanScan®

The ultimate scanning experience

Now
connected to
your Planmeca
dental unit

World class scanning ergonomics

*The dental unit integrated **Planmeca PlanScan**® intraoral scanner enables chairside scanning like never before. Its unique integration with Planmeca dental units guarantees a smooth workflow as real-time scanning data is immediately available from your chairside tablet.*

Dental unit integrated intraoral scanner

The ultra-fast and accurate **Planmeca PlanScan**® can now be easily integrated into your digital Planmeca dental unit. Due to a chairside integrated Full HD tablet device, you have constant and optimal access to live scanning data. This allows you to focus on clinical work in the treatment area without any distractions.

For an even smoother workflow, scanning can also be controlled from the dental unit's wireless foot control. In addition, the scanner provides practical sound guidance to ensure optimal data capture.

Unique foot controlled scanning

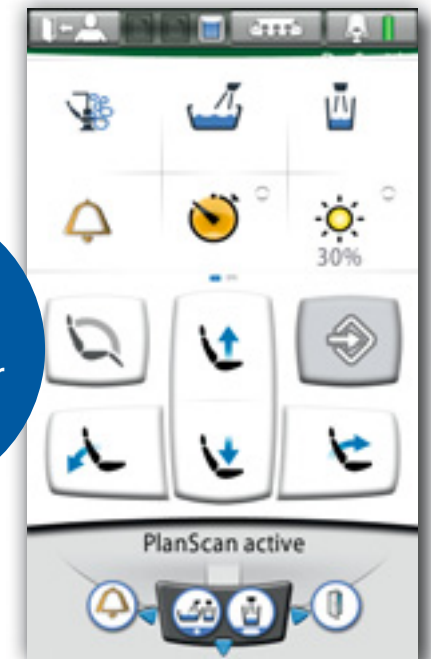
What really sets Planmeca PlanScan apart from other scanners is that you can conveniently control its use from the dental unit's foot control, leaving your hands free for scanning and patient treatment at all times. You can use the foot control to easily toggle between prep, opposing, and buccal views, so that you can focus on scanning without interruptions. Hands-free operation also guarantees impeccable infection control.

Easy and flexible use

Planmeca PlanScan has been designed for an efficient workflow – it is used just like any other instrument and shared effortlessly between different users. The plug-and-play scanner can also be easily installed in different dental units and different rooms. The flexible licensing system allows simultaneous use on multiple workstations during different CAD/CAM workflow steps.



Use the scanner just like any other instrument



Discover the unparalleled benefits of integrated Planmeca PlanScan®

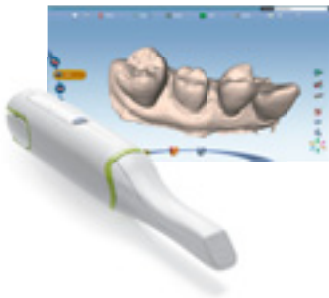
- Smooth and effortless workflow lets you concentrate on your patient
- Constant access to real-time scanning data
- Hands-free operation with wireless foot control
- Plug-and-play scanner with sound guidance
- Can be upgraded to any Planmeca dental unit
- Can be shared between different operatories
- Intelligent **Planmeca Romexis®** software licensing – different work phases (scan, design, and manufacture) can be performed simultaneously by different users

PLANMECA FIT™

Open CAD/CAM System

Scan

Planmeca PlanScan®



Design

Planmeca PlanCAD® Easy



Mill

Planmeca PlanMill® 40 S



Send to dental lab

Planmeca Romexis® lab order form

PLANMECA

Asentajankatu 6 | 00880 Helsinki | Finland | tel. +358 20 7795 500 | sales@planmeca.com | www.planmeca.com

Images may contain optional items not included in standard delivery. Available configurations and features may have country or area specific variations. Some products displayed above may not be available in all countries or areas. Rights for changes reserved.

Planmeca, All in one, Anatomat Plus, Cobra, Comfy, DentreVac, Digital perfection, Economat Plus, Elegant, Flexy, Mini-dent, Perio Fresh, PlanEasyMill, Planmeca 4D, Planmeca AINO, Planmeca ARA, Planmeca CAD/CAM, Planmeca Chair, Planmeca Clarify, Planmeca Compact, Planmeca Creo, Planmeca FIT, Planmeca Intra, Planmeca iRomexis, Planmeca Lumion, Planmeca Lumo, Planmeca Maximity, Planmeca Minea, Planmeca Minendo, Planmeca Minetto, Planmeca mRomexis, Planmeca Noma, Planmeca Olo, Planmeca Online, Planmeca PlanCAD, Planmeca PlanCAM, Planmeca PlanClear, Planmeca PlanID, Planmeca PlanMill, Planmeca Planosil, Planmeca PlanPure, Planmeca PlanScan, Planmeca PlanView, Planmeca ProCeph, Planmeca ProFace, Planmeca ProID, Planmeca ProMax, Planmeca ProModel, Planmeca ProOne, Planmeca ProScanner, Planmeca ProSensor, Planmeca ProX, Planmeca Romexis, Planmeca Serenus, Planmeca SingLED, Planmeca SmartGUI, Planmeca Solea, Planmeca Sovereign, Planmeca Ultra Low Dose, Planmeca Vision, Planmeca Verity, Planmeca Waterline Cleaning System, Planmeca Xtremity, Proline Dental Stool, ProTouch, Saddle Stool, SmartPan, SmartTouch, Trendy, and Ultra Relax are registered or non-registered trademarks of Planmeca in various countries.

