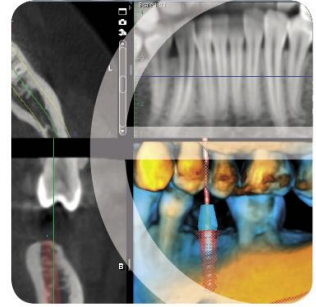


3D winter school



The Nordic Institute of Dental Education offers leading continuing education to dental professionals from all around the world.

Our 3D winter school package is the perfect combination of business and pleasure, as it combines an academically accredited 3D imaging course in Helsinki with an exciting snowy adventure in Lapland.

After a productive course of learning the latest skills and knowledge in 3D imaging, spend a memorable weekend in Lapland hunting the aurora borealis and connecting with the elements in the arctic tranquillity.

Attend our 3D winter school to get the most of your CBCT investment and experience Lapland's winter wonderland!

Course objectives:

- Interpret CBCT images and understand the principles of 3D imaging
- Understand effective patient doses and minimize exposure
- Recognize anatomical variations and pathologic conditions

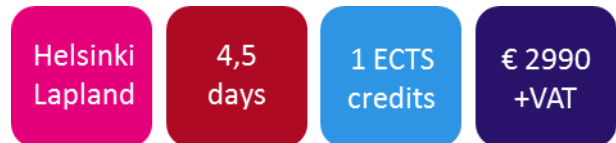
Target group

- International dentists and radiologist with an interest in 3D imaging
- Dental professionals interested in visiting Finnish Lapland
- The course will be carried out in English

Venues

Planmeca Digital Academy Training Center
Asentajankatu 6
FIN-00880 Helsinki, Finland

Harriniva Holiday Centre Ltd
Harrinivantie 35
FIN-99330 Muonio, Finland



Lecturers

- **Dr. Bart Vandenberghe**
DDS, MSc, PhD (University of Leuven, Belgium)
- **Dr. Livia Corpas**
DDS, MSc, PhD (University of Leuven, Belgium)
- Hands-on instructors: **Erkki Hiltunen** or **Mark Niemi**
Dental X-Ray Product Managers (Planmeca, Finland)

Course fee

The course is priced at 2,990€ + value added tax (24%).
The price includes:

- NIDE's 3D imaging and diagnostics course in Helsinki (2 days) – including training materials and an ECTS certificate
- Nordic dinner and possibility to try a sauna in Helsinki
- Winter adventure in Lapland: snowmobile safari, husky safari, and hunting for aurora borealis (2 days)
- Flights Helsinki-Kittilä-Helsinki, and transportation between Kittilä and Muonio
- Five combined hotel nights in Helsinki and Muonio (3 star hotels)
- Possibility to sleep in an igloo on Saturday night
- Polar gear in Lapland
- Lunches from Wednesday to Saturday
- Dinners on Wednesday, Friday and Saturday

Please note that the package does not include trips to and from Helsinki – see the itinerary and terms and conditions for the details.

For further information and registration, please contact:

Elli Homanen
Training Coordinator, NIDE
Tel. +358-20-779 5101
elli.homanen(at)nordicdented.com

Course schedule

2 days with a combined 12 hours of lectures and hands-on training

(1 ECTS point, European Credit Transfer System)

2.5 day winter adventure in Lapland

3D imaging and diagnostics

Day 1

Theory and practice of 3D imaging

- Principles of dental imaging
- 2D and 3D imaging in dentistry
- Basic dental anatomy revisited + 3D anatomy (+ exercises)
- 3D image analysis: introduction
- CBCT and 3D image analysis
- Diagnostic applications of CBCT
- Basic dental pathology examples and software considerations
- Small, medium & large field-of-view CBCT
- Principles of use, dosimetry and radioprotection exercises (imaging protocols)

- *Sauna evening and Nordic dinner at Planmeca's seaside villa*

Day 2

3D imaging and diagnostics

- Interpretation principles in radiology
- 3D image manipulation and planning
- Diagnostic considerations for endo/perio/prostho/ortho
- CBCT diagnostics: indications and pathology
- Pathology examples and exercises
- Advanced image analyses: 3D manipulation
- 3D visualization techniques
- Artifacts: practical considerations

- *Voluntary visit to Planmeca headquarters and factory*

Winter adventure in Lapland

Day 3

Winter adventure in Lapland

- Flight to Kittilä
- Lunch
- Exploring local area by walking
- Dinner
- Northern lights snowmobile safari

Day 4

Winter adventure in Lapland

- Breakfast
- 17km husky safari
- Lunch
- Spa, sauna and ice swimming
- Dinner
- Snowshoeing and warm drinks
- Possibility to spend the night in an igloo

Day 5

Winter adventure in Lapland

- Breakfast
- Flight to Helsinki

