

Planmeca ProModel™

Improved surgical results with
patient-specific implants



Planmeca ProModel™ – a unique

Planmeca ProModel™ offers patient-specific implants, surgical guides, and anatomical models for improved surgical results. Together with our superior CBCT images and 3D face photos, they offer you the best tools to succeed in both pre-planning and the surgery itself.

Applications

- Veterinary surgery
- Corrective orthopaedic surgery
- Osteotomy guides
- 3D printed true-to-size (1:1) models of anatomical hard tissue

Key benefits

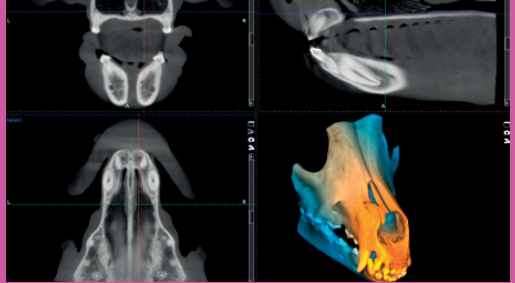
- Shorter operation times
- Improved aesthetic, physiological and anatomical results
- Enhanced predictability
- Shorter recovery times
- Reduced deep infection risk



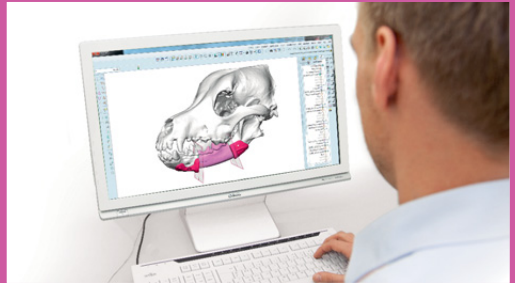
service for surgery

Simple and fast

- 1 CT images are uploaded over a secure internet portal



- 2 Joint online design session (approximately 30 minutes)



- 3 Delivery and operation



The Planmeca ProModel™ service has provided 3D surgery design and patient-specific implants since 2009.

“Planmeca is an integral part of our veterinary oral surgical team and allows us to accurately diagnose and treat maxillofacial conditions like never before! The Planmeca ProModel custom designed plating is fundamental to decrease our surgical time and optimize outcomes.

Thank you, Planmeca!”

Dr. Jean Battig

DVM, Diplomate, American Veterinary Dental College
Advanced Dentistry & Oral Surgery
Portland, Oregon, USA



Further information:

promodel.planmeca.com

Patient data upload portal:

planmeca.com/promodelservice

PLANMECA GROUP

Asentajankatu 6 | 00880 Helsinki | Finland | tel. +358 20 7795 500 | veterinary@planmeca.com | www.planmeca.com

Images may contain optional items not included in standard delivery. Available configurations and features may have country or area specific variations. Some products displayed above may not be available in all countries or areas. Rights for changes reserved.

Planmeca, Planmeca Group, and Planmeca ProModel are registered or non-registered trademarks of Planmeca in various countries.

