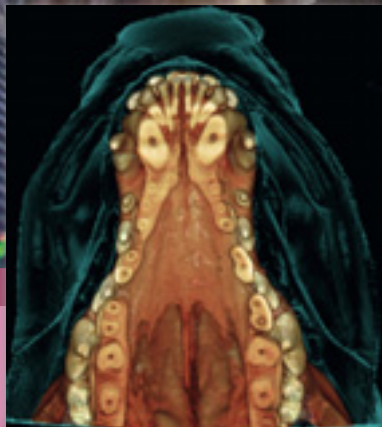


Planmed Verity[®]

CBCT veterinary scanner



ENGLISH

PLANMECA GROUP

Compact and mobile high-resolution 3D tomography scanner

Planmed Verity® is an ideal 3D device – it provides high-resolution volumetric images of your animal patient at a particularly low dose.

Less missed diagnoses

Planmed Verity® has been designed to find subtle and occult fractures at the first visit to an imaging facility. The system features specialised imaging functions and tools that ensure an optimal low dose imaging process.

Excellent image quality

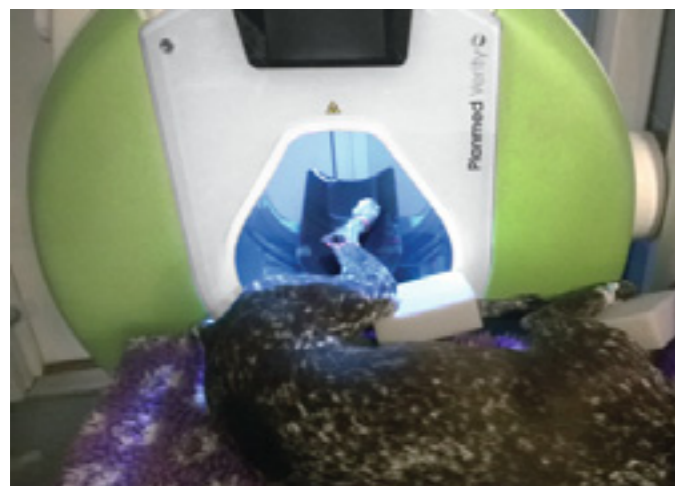
CBCT technology offers unlimited contrast and the highest available resolution for imaging patient anatomy.

Perfect patient positioning

Planmed Verity offers motorised tilt and up/down movements for optimised patient positioning. The device's integrated video camera gives you an extra eye when positioning your patient.

Compact and mobile

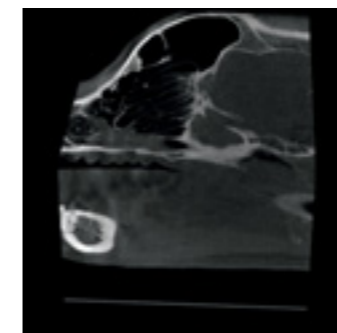
The compact and mobile Planmed Verity brings 3D imaging directly to where the patient is. The equipment can be moved to another location when not in use.



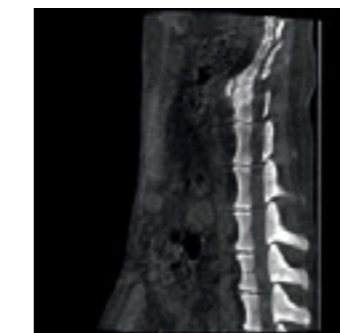
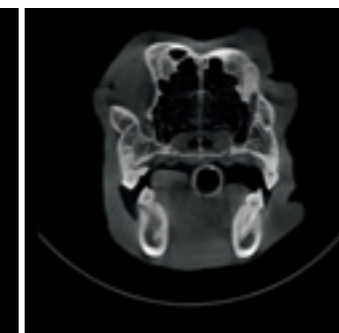
Planmeca Romexis® – software for all imaging needs



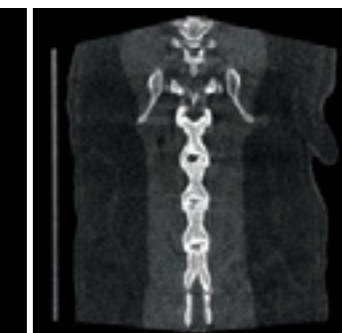
Planmeca Romexis® is an advanced, easy-to-use software suite for both Mac and Windows environments. It provides a rich set of tools to meet all imaging requirements and supports the most versatile range of 2D and 3D imaging modalities.



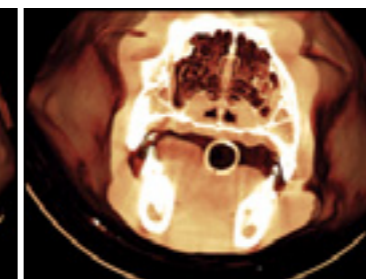
Bone – Sinus



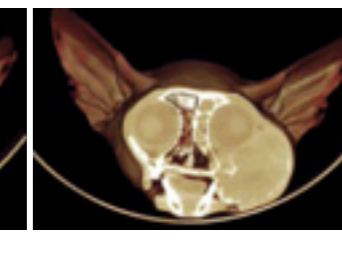
Bone – Spine



Soft tissue – Sinus



Soft tissue – Face



New standard for veterinary imaging

Why Cone Beam Computed Tomography?

CBCT is an X-ray imaging technology in which a large number of 2D images are taken of a patient from different angles. A 3D volumetric image is then calculated using these 2D projections. The resulting images can be viewed with our advanced imaging software from any angle, including the axial, coronal, sagittal and cross-sectional planes.



2D image



CBCT image

Planmed Verity®, technical specifications

X-ray beam	Cone
Anode voltage	80–96 kV
Anode current	2.4–12 mA
Focal spot	0.6 mm, fixed anode
Image detector	Flat panel
Gray scale	14 Bit
Detector resolution	1575 x 1969 pixel, pixel size 127 µm x 127 µm
Image acquisition	210 degree rotation
Scan time	18 s, pulsed X-ray
Reconstruction time	30–120 s

Planmed Verity®, dimensions



Follow us on social media!



Images courtesy of:

Dr. Helena Kuntsi-Vaattovaara, DVM, Dipl. EVDC, Dipl. AVDC

Dr. Bonnie Shope, VMD, Dipl. AVDC

Dr. Jean Battig, DVM, Dipl. AVDC

PLANMECA GROUP

Asentajankatu 6 | 00880 Helsinki | Finland | tel. +358 20 779 5500 | fax +358 20 779 5555 | veterinary@planmeca.com | www.planmeca.com

Images may contain optional items not included in standard delivery. Available configurations and features may have country or area specific variations. Some products displayed above may not be available in all countries or areas. Rights for changes reserved.

Planmeca, All in one, Anatomat Plus, Cobra, Comfy, DentoVac, Digital perfection, Economat Plus, Elegant, Flexy, Mini-dent, Perio Fresh, PlanEasyMill, Planmeca 4D, Planmeca ActiveAqua, Planmeca AINO, Planmeca ARA, Planmeca CAD/CAM, Planmeca CALM, Planmeca Chair, Planmeca Clarify, Planmeca Compact, Planmeca Creo, Planmeca Emerald, Planmeca FIT, Planmeca Intra, Planmeca iRomexis, Planmeca Lumion, Planmeca Lumo, Planmeca Maximity, Planmeca Minea, Planmeca Minendo, Planmeca Minetto, Planmeca mRomexis, Planmeca Noma, Planmeca Olo, Planmeca Online, Planmeca PlanCAD, Planmeca PlanCAM, Planmeca PlanClear, Planmeca PlanDesk, Planmeca PlanID, Planmeca PlanMill, Planmeca Planosil, Planmeca PlanPure, Planmeca PlanScan, Planmeca PlanView, Planmeca ProCeph, Planmeca ProFace, Planmeca ProLD, Planmeca ProMax, Planmeca ProModel, Planmeca ProOne, Planmeca ProScanner, Planmeca ProSensor, Planmeca ProX, Planmeca Romexis, Planmeca Serenus, Planmeca SingLED, Planmeca SmartGUI, Planmeca Solanna, Planmeca Sovereign, Planmeca Ultra Low Dose, Planmeca Vision, Planmeca Viso, Planmeca Verity, Planmeca Waterline Cleaning System, Planmeca Xtremity, Proline Dental Stool, ProTouch, Saddle Stool, SmartPan, SmartTouch, Trendy, and Ultra Relax are registered or non-registered trademarks of Planmeca in various countries.