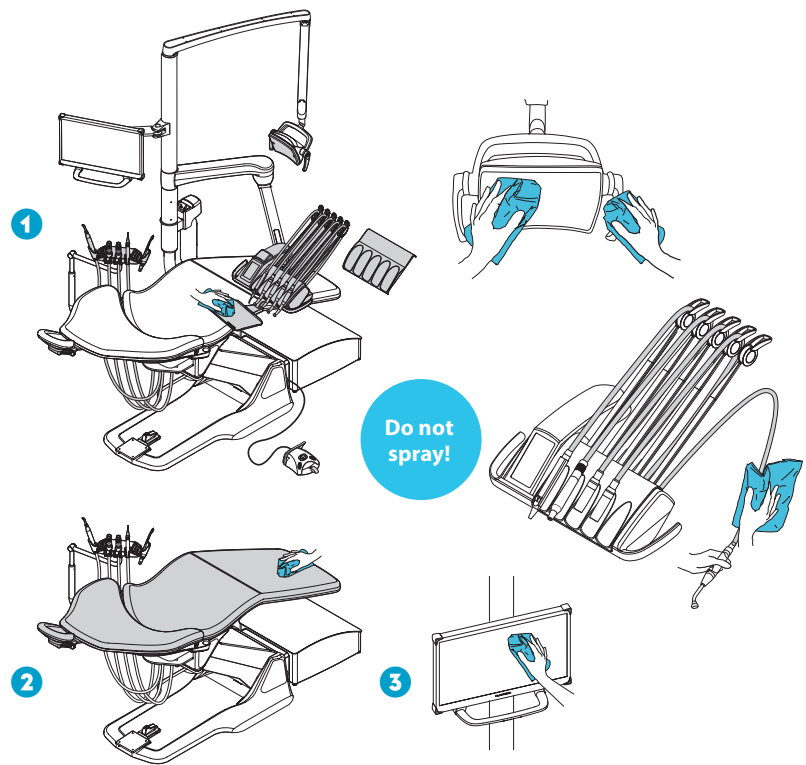


After every patient

Surfaces

- 1 Wipe with Planmeca approved surface disinfectant:
 - metal parts of headrest
 - metal parts of armrests
 - front cover of the operating light
 - handles of the operating light
 - hygienic membrane
 - instrument hoses
 - instruments (see instrument instructions)
 - instrument console*
 - balanced instrument arms
 - tray
- 2 Wipe the upholstery with mild soap- and water solution. Wipe with Planmeca approved upholstery disinfectant if needed.
- 3 Wipe the monitor and the handle (see monitor instructions).



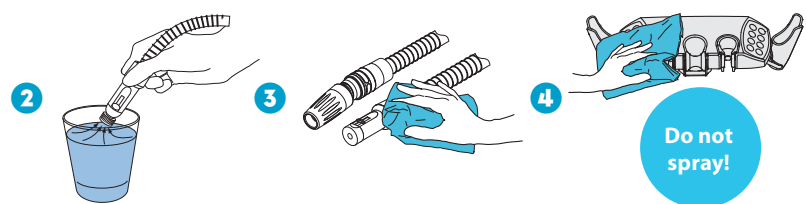
*Before cleaning the instrument console, lock the touch screen.

- 🔒 Touch screen is unlocked. Press to lock.
- 🔒 Touch screen is locked. Press and hold to unlock.

Before covering the instrument console and touch screen with a protective cover (optional), make sure they are dry.

Suction system

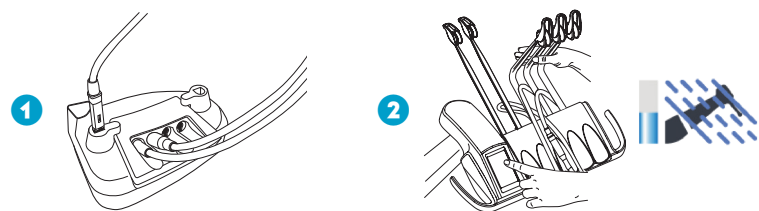
- 1 Remove used aspirating tips.
- 2 Rinse the suction tubes by aspirating one glass of water with each suction tube.
- 3 Wipe the suction handpieces with Planmeca approved surface disinfectant.
- 4 Wipe the suction holder with Planmeca approved surface disinfectant.



Waterlines

Short flushing

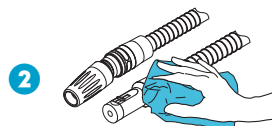
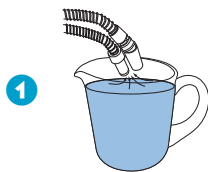
- 1 Place all water consuming instruments into the flushing holder.
- 2 Bend the instrument arms to an angle of at least 90° and start short flushing.



In the morning

Suction system

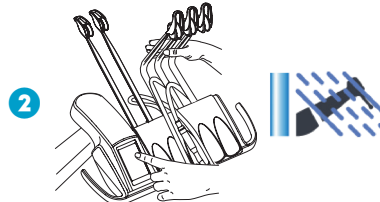
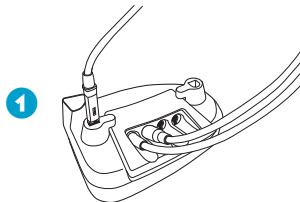
- 1 Rinse the suction tubes by aspirating 0.5 l of water with each suction tube.
- 2 Wipe the suction handpieces with Planmeca approved surface disinfectant.



Waterlines

Long flushing

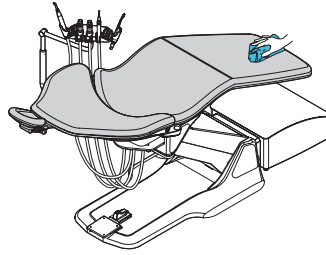
- 1 Place all water consuming instruments into the flushing holder.
- 2 Bend the instrument arms to an angle of at least 90° and start long flushing.



After working day

Surfaces

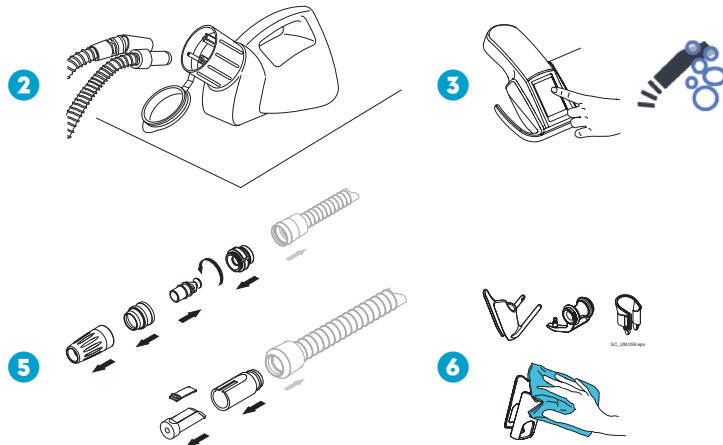
Wipe the upholstery with Planmeca approved upholstery disinfectant.



Suction system

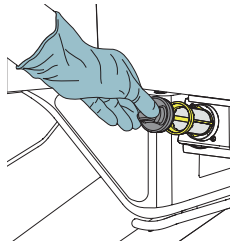
Suction cleaning

- 1 Mix 20 ml of Planmeca approved suction disinfectant with 1 l of water in OroCup.
- 2 Attach the suction handpieces to OroCup.
- 3 Start Manual suction cleaning.
- 4 Return the suction hoses back to the holders.
- 5 Disinfect the suction handpieces in a washer-disinfector.
- 6 Suction holder: Disinfect the individual holders in a washer-disinfector. Wipe the intraoral scanner holder with Planmeca approved surface disinfectant.



Filters

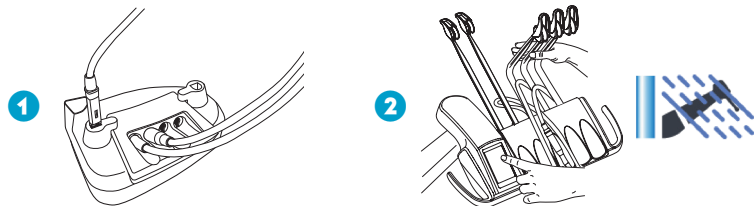
Empty the disposable filter into a separate amalgam container.



Waterlines

Long flushing

- 1 Place all water consuming instruments into the flushing holder.
- 2 Bend the instrument arms to an angle of at least 90° and start long flushing.

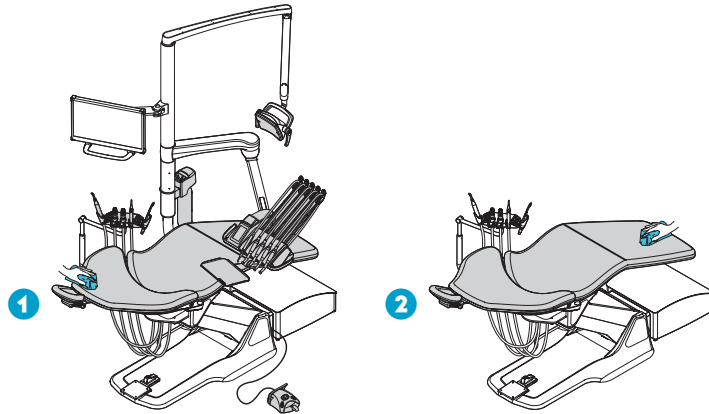


- 3 Switch off the unit.

Weekly

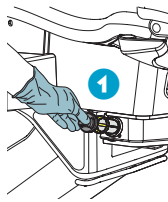
Surfaces

- 1 Wipe all surfaces with mild soap- and water solution.
- 2 Wipe the upholstery with Planmeca approved upholstery treating agent.



Filters

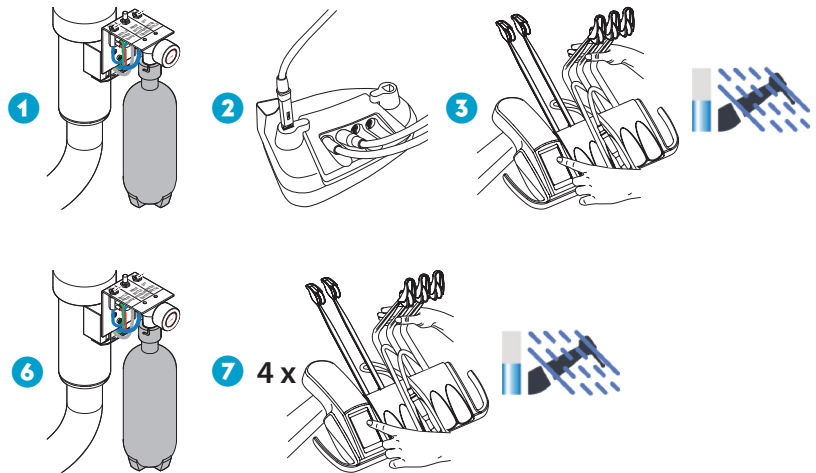
- 1 Replace the disposable filter.



Waterlines

Waterline cleaning

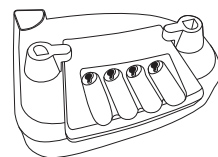
- 1 Fill the clean-water bottle with 2 dl of Planmeca approved waterline disinfectant.
- 2 Place all water consuming instruments into the flushing holder.
- 3 Bend the instrument arms to an angle of at least 90° and start short flushing.
- 4 Turn the unit off.
- 5 The next morning, clean the clean-water bottle using a bottle brush and a mild soap- and water solution.
- 6 Fill the bottle with clean water.
- 7 Bend the instrument arms to an angle of at least 90° and start short flushing. Repeat short flushing at least three more times or until the water is clean.



Monthly

Suction system and waterlines

Clean the instrument flushing holder using a soft brush and a mild soap- and water solution.



Filters

- 1 Empty the oil collector.

