

Maintenance and infection control

After every patient

Surfaces

1 Wipe with Planmeca approved surface disinfectant:

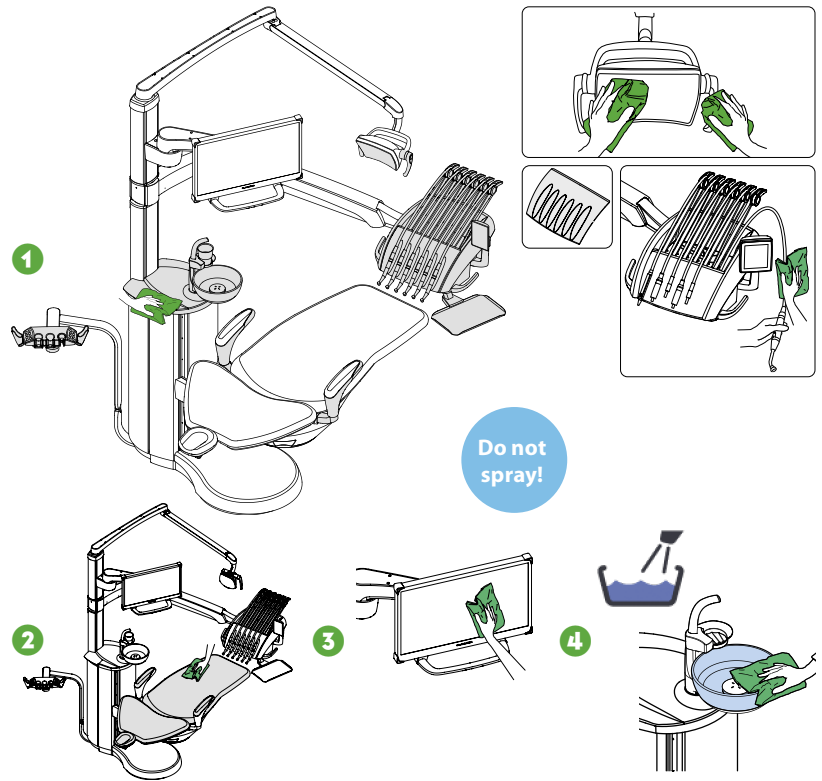
- metal parts of headrest
- metal parts of armrests
- protective fascia of the operating light
- handles of the operating light
- hygienic membrane
- instrument hoses
- instruments (see instrument instructions)
- instrument console*
- balanced instrument arms
- tray table
- cuspidor top cover
- outside of the bowl

2 Wipe the upholstery with mild soap- and water solution. Wipe with Planmeca approved upholstery disinfectant if needed.

3 Wipe the monitor and the handle (see monitor instructions).

4 Clean the bowl:

- Pour a few drops of Planmeca approved suction disinfectant into the bowl and use a soft brush.
- Rinse the bowl by pressing the bowl rinse button.



*Before cleaning the instrument console, lock the touch screen.

Touch screen is unlocked. Press to lock.

Touch screen is locked. Press and hold to unlock.

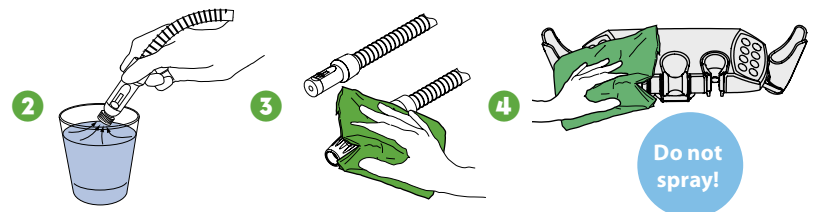
Suction system

1 Remove used aspirating tips.

2 Rinse the suction tubes by aspirating one glass of water with each suction tube.

3 Wipe the suction handpieces with Planmeca approved surface disinfectant.

4 Wipe the *Flexy*™ holder with Planmeca approved surface disinfectant.

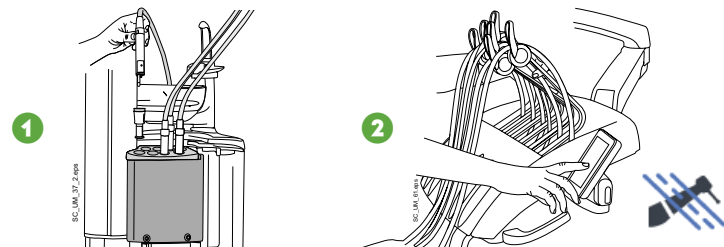


Waterlines

Short flushing

1 Place all water consuming instruments into the flushing holder.

2 Bend the instrument arms to an angle of at least 90° and start short flushing.

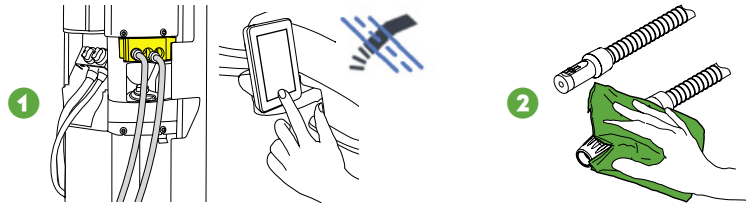


In the morning

Suction system

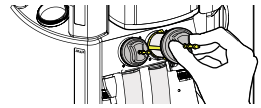
Suction flushing

- 1 Start suction flushing.
- 2 Wipe the suction handpieces with Planmeca approved surface disinfectant.



Filters

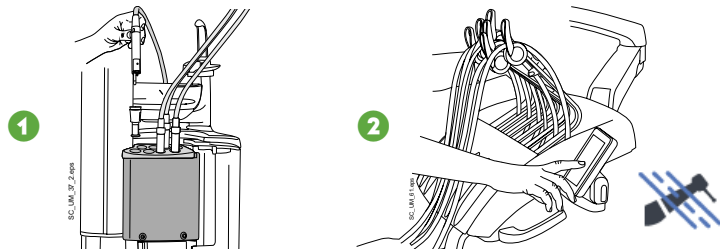
Clean the coarse filters.



Waterlines

Long flushing

- 1 Place all water consuming instruments into the flushing holder.
- 2 Bend the instrument arms to an angle of at least 90° and start long flushing.



After working day

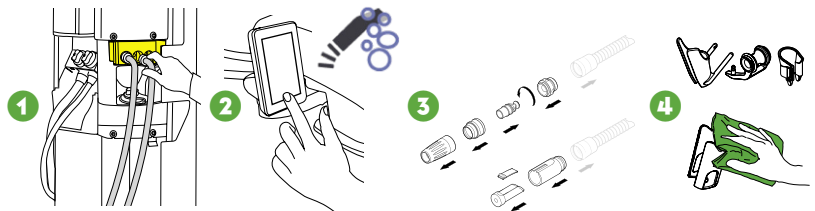
Surfaces

Wipe the upholstery with Planmeca approved upholstery disinfectant.

Suction system

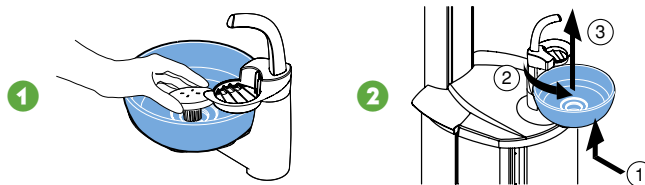
Suction cleaning

- 1 Insert the suction tubes into the suction tube cleaning holder.
- 2 Start suction cleaning.
- 3 Disinfect the suction handpieces in a washer-disinfector.
- 4 *Flexy™* holder: Disinfect the individual holders in a washer-disinfector. Wipe the intraoral scanner holder with Planmeca approved surface disinfectant.



Filters

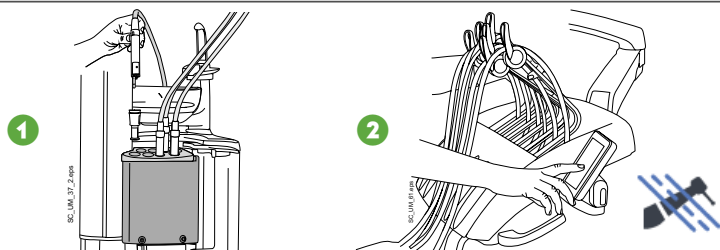
- 1 Empty, clean and disinfect the bowl filter in a washer-disinfector.
Attention! Do not empty the bowl filter to the drain.
- 2 Remove the bowl and wash at max 65°C.



Waterlines

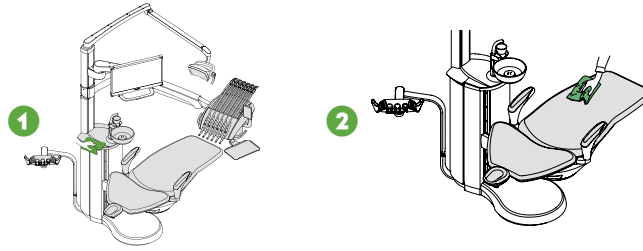
Long flushing

- 1 Place all water consuming instruments into the flushing holder.
- 2 Bend the instrument arms to an angle of at least 90° and start long flushing.



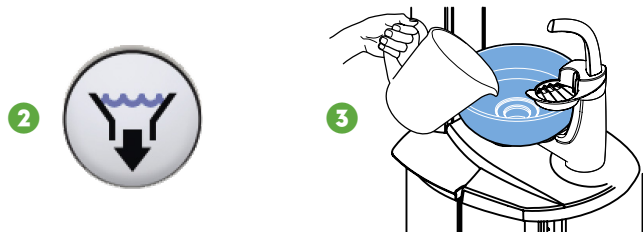
Surfaces

- 1 Wipe all surfaces with mild soap- and water solution.
- 2 Wipe the upholstery with Planmeca approved upholstery treating agent.



Suction system

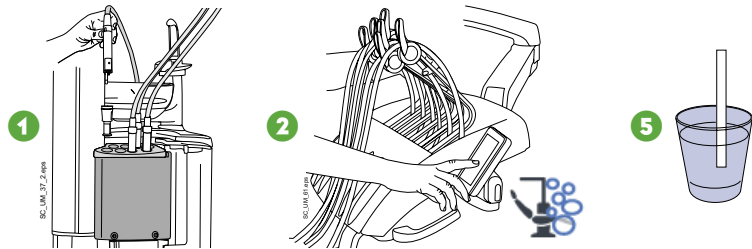
- 1 Mix 20 ml of Planmeca approved suction disinfectant with 1 l of water.
- 2 Press the VS/A button. The bowl valve opens.
Note, Dürr amalgam separators or VS/A systems only.
- 3 Pour the mixture into the bowl.
- 4 Let the solution affect overnight.



Waterlines, if continuous cleaning is disabled

Waterline cleaning

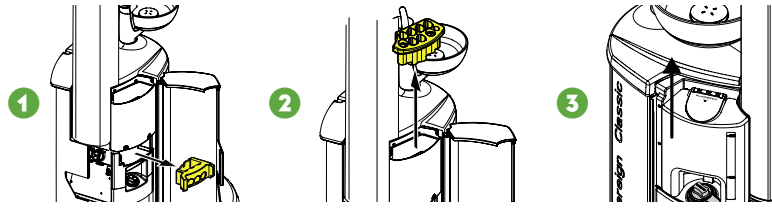
- 1 Place all water consuming instruments into the flushing holder.
- 2 Bend the instrument arms to an angle of at least 90° and start waterline cleaning.
- 3 Shut down the dental unit for the night.
- 4 Turn the unit on and wait until the cleaning cycle has finished.
- 5 Test that the hydrogen peroxide concentration of the water is < 250 ppm. If not, perform long flushing and test again.



Monthly

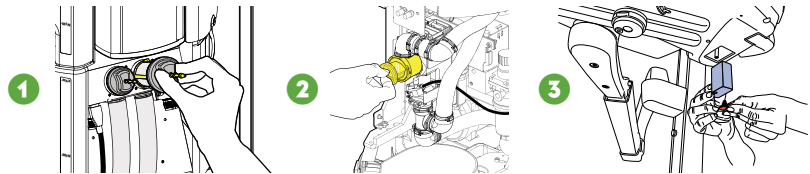
Suction system and waterlines

- 1 Disinfect the suction tube cleaning holder in a washer-disinfector.
- 2 Disinfect the instrument flushing holder in a washer-disinfector. Autoclave if needed.
- 3 Remove the water container and clean it.



Filters

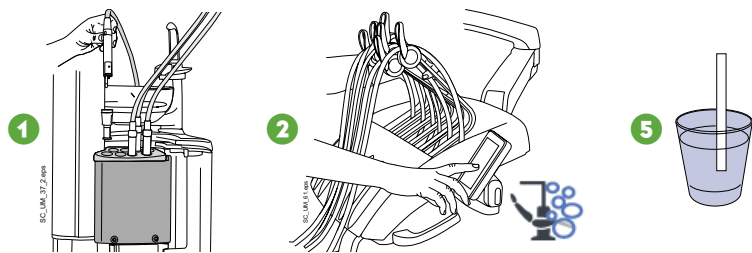
- 1 Replace the coarse filters.
- 2 Empty the VS/A fine filter.
- 3 Empty the oil collector.



Waterlines, if continuous cleaning is enabled

Waterline cleaning

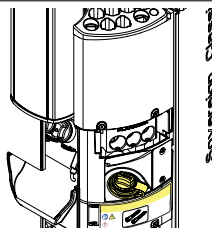
- 1 Place all water consuming instruments into the flushing holder.
- 2 Bend the instrument arms to an angle of at least 90° and start waterline cleaning.
- 3 Shut down the dental unit for the night.
- 4 Turn the unit on and wait until the cleaning cycle has finished.
- 5 Test that the hydrogen peroxide concentration of the water is < 250 ppm. If not, perform long flushing and test again.



Containers

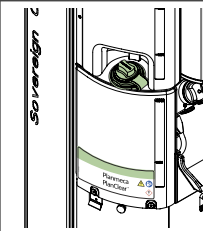
Suction disinfectant container

Fill when yellow icon at the top of the control panel flashes. The fill interval is approximately four weeks.



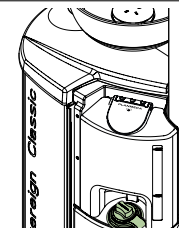
Planmeca PlanClear™ container

Fill when green icon at the top of the control panel flashes. The fill interval is approximately four weeks.



Water container

Fill when blue icon at the top of the control panel flashes.



10035140_8/02.2020/en