

# Quick guide – Panoramic errors

## Error: Radiopacity in the mandibular symphysis



### Cause

Vertebrae are truncated. Notice the spine angulation and lack of spine in the image.

### Remedy

Position patient's neck in a more upright, neutral position, bring patient's feet forward.

## Error: Radiopaqueness throughout image, Large anteriors



### Cause

Layer light or Autofocus layer light positioned too far forward. Notice no spine in the image.

### Remedy

Move layer light back to root tip of tooth #12.

## Error: Small teeth and lots of spine in the image



### Cause

Layer light or Autofocus layer light positioned too far back. Notice the small teeth and the amount of spine in the image.

### Remedy

Move layer light forward to the root tip of tooth #12.

## Error: Exaggerated smile (curve of spee)



### Cause

Patient's chin positioned too low.

### Remedy

Raise panoramic to raise patient chin.

## Error: Frown curve of spee



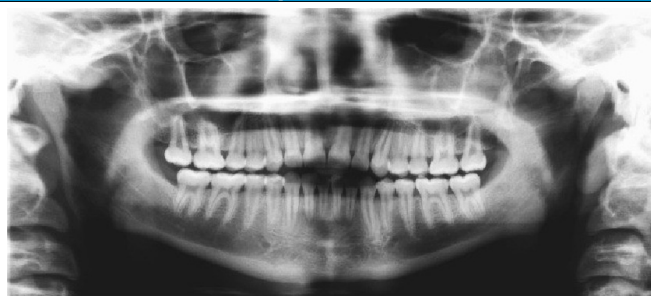
### Cause

Patient's chin positioned too high.

### Remedy

Lower panoramic to lower patient chin.

### Error: Flat curve of spee



#### Cause

Patient's chin positioned too high.

#### Remedy

Lower panoramic to lower patient chin.

### Error: Radiopacity in lower anteriors



#### Cause

Lead apron positioned too high on the back of patient.

#### Remedy

Position lead apron high in the front and low in the back.

### Error: Tilted image. Notice one condyle higher than the other



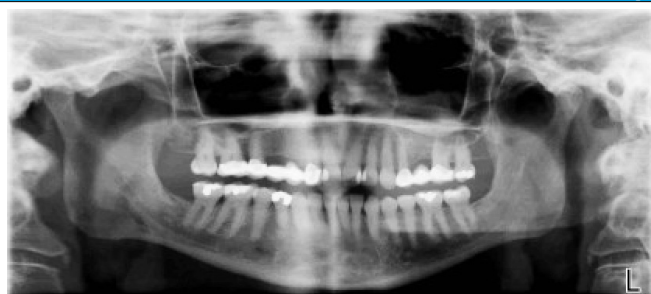
#### Cause

Mid-sagittal laser misaligned. Patient tilted.

#### Remedy

Position mid-sagittal light in the center of the nasion.

### Error: Ramus and teeth are different sizes on opposing sides



#### Cause

Patient twisted.

#### Remedy

Ensure patient is positioned straight in panoramic.

### Error: Radiolucent arch through maxilla



#### Cause

Patient's tongue not on roof of mouth. Notice dark arch throughout maxilla darkening the apices.

#### Remedy

Instruct patient to close lips, swallow, and place tongue to roof of mouth.

### No errors



#### Cause

- Layer light correctly positioned – incisors are clear.
- Midsagittal line correctly aligned, patient is not twisted – image is symmetric.
- Neck straight – no spine shadow.
- Frankfort plane horizontal – slightly smiling.

#### Remedy

–