

# Quick guide – Capturing 3D image

## Preparation

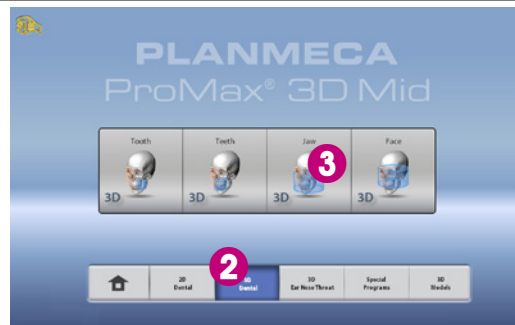
### Planmeca Romexis® software

- 1 Select 3D Capture.

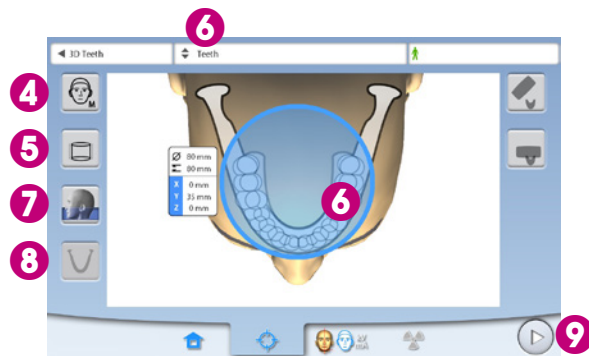


### Planmeca ProMax® X-ray unit

- 2 Change program group if needed.
- 3 Select imaging program.



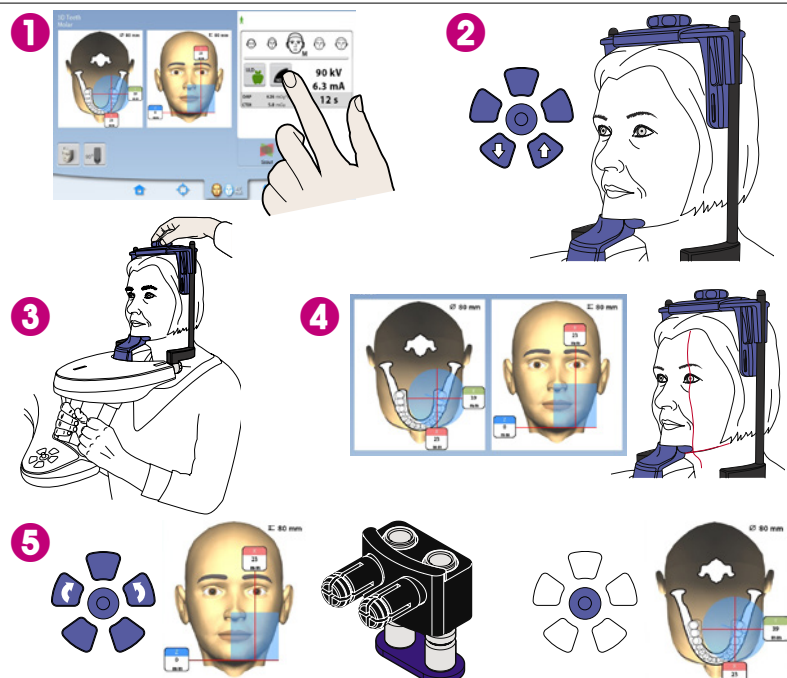
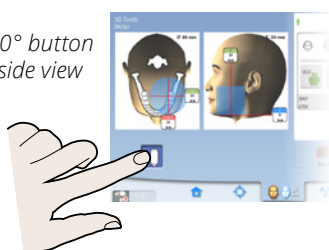
- 4 Select patient size.
- 5 Select volume diameter.
- 6 Select volume position.
- 7 Select volume height.
- 8 Select jaw side or double scan.
- 9 Go forward.



## Patient positioning

- 1 Select resolution.
- 2 Adjust height of X-ray unit according to patient.  
Place patient's chin in chin cup and ensure that the occlusal plane is horizontal.
- 3 Ask patient to grasp patient handles. Tighten head support.
- 4 Ensure that laser positions correspond with illustration on touch screen.
- 5 Make fine adjustments to volume location if needed.  
Planmeca ProMax 3D s and Classic: move volume up/down by adjusting adapter height.

**Tip!** Use 90° button for better side view of patient



# Capture scout image

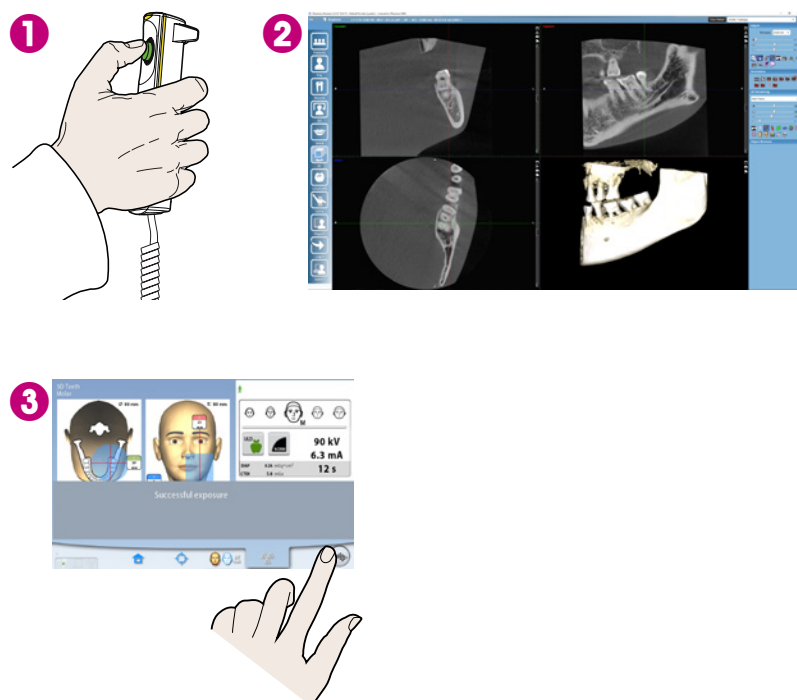
Recommended with small volumes

- 1 Select scout imaging.
- 2 Go forward.
- 3 Press and hold down exposure button.
- 4 Images are shown on computer screen.
- 5 If scout images are OK, go forward.
- 6 If needed, make fine adjustments and repeat steps 3-5.



# Capture 3D image

- 1 Press and hold down exposure button.
- 2 Image is shown on computer screen.
- 3 Finish procedure.
- 4 Guide patient away from X-ray unit.



30004300\_2/12.2016/en