

Planmed Clarity™ S

Digital mammography made easy



Reliable companion for your everyday breast imaging needs

Planmed Clarity™ S is the ideal choice for a cost-effective digital mammography system. The unit can handle the most demanding workloads from everyday screenings to follow-up studies and 2D biopsies. Planmed's trusted technology promises high performance and quality results.

A mammography system for any clinic needs

Planmed Clarity™ S is the safe and cost-effective choice for mammographic breast examinations. Its advanced technology and clever solutions enable an efficient workflow at busy screening centers as well as smaller clinics.

Owing to the compact design, durable a-Si detector and single phase power feed, the unit also adapts well to demanding conditions such as mobile installations.

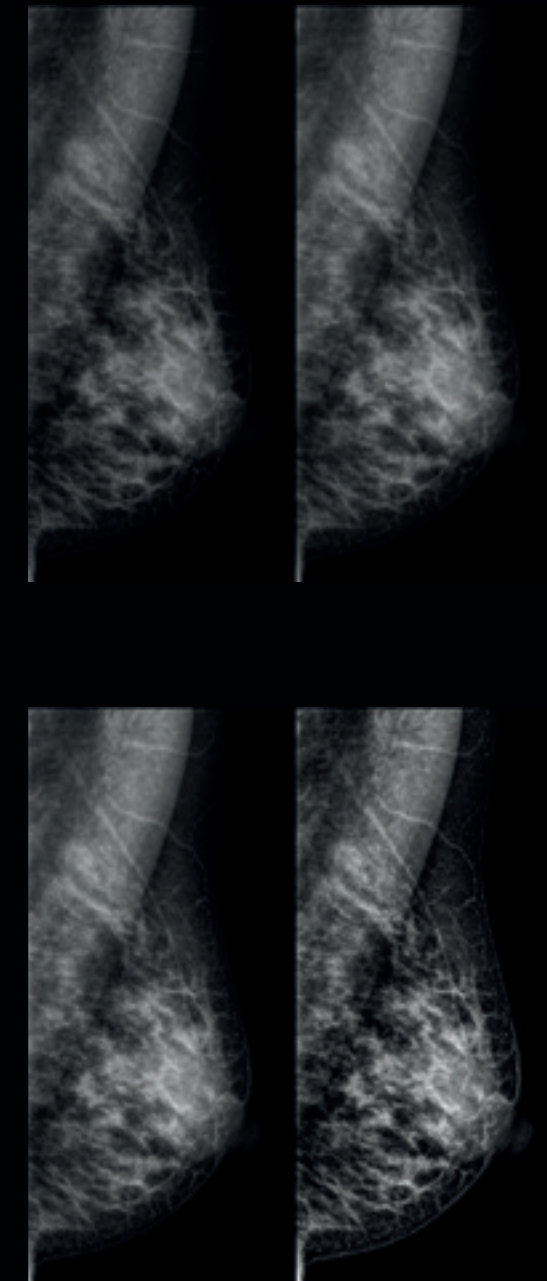
Superior ergonomics

Planmed Clarity™ S comes with many of the popular features of the Planmed Clarity product family. Features such as the OneTouch™ workflow, extended handlebars and curved chin guard enhance both staff and patient comfort. The paddle adjusts gently to the human anatomy, reducing patient discomfort during examination.

The acquisition workstation includes the Planmed Clarity™ Flow software, which together with the foot controls makes for a smooth user experience.

Tailored image post-processing

We take quality imaging seriously even at the lowest patient doses. Our post-processing for contrast, sharpness and brightness can be fine-tuned to suit varying professional needs and achieve the optimal image.



Key features

- Well-suited for everyday screenings and diagnostic studies
- Small and compact size, easy to install
- Robust and reliable with latest detector technology
- Superior ergonomics and usability

Technical specifications

Detector technology	a-Si
Detector size	24 x 30 cm
Pixel size	83 um
X-ray tube anode material	Tungsten
Filters	Rhodium, Silver
Swivel range	-135 to +180 degrees
Vertical travel	81–138 cm
Source-detector distance	65 cm
Monitors	2.1 MP (standard) and 3 MP (optional)

CE 0598  Planmed Clarity CE Planmed Wave



Planmed

Planmed Oy Sorvaajankatu 7 | 00880 Helsinki | Finland | tel. +358 20 7795 300 | fax +358 20 7795 664 | sales@planmed.com | www.planmed.com

